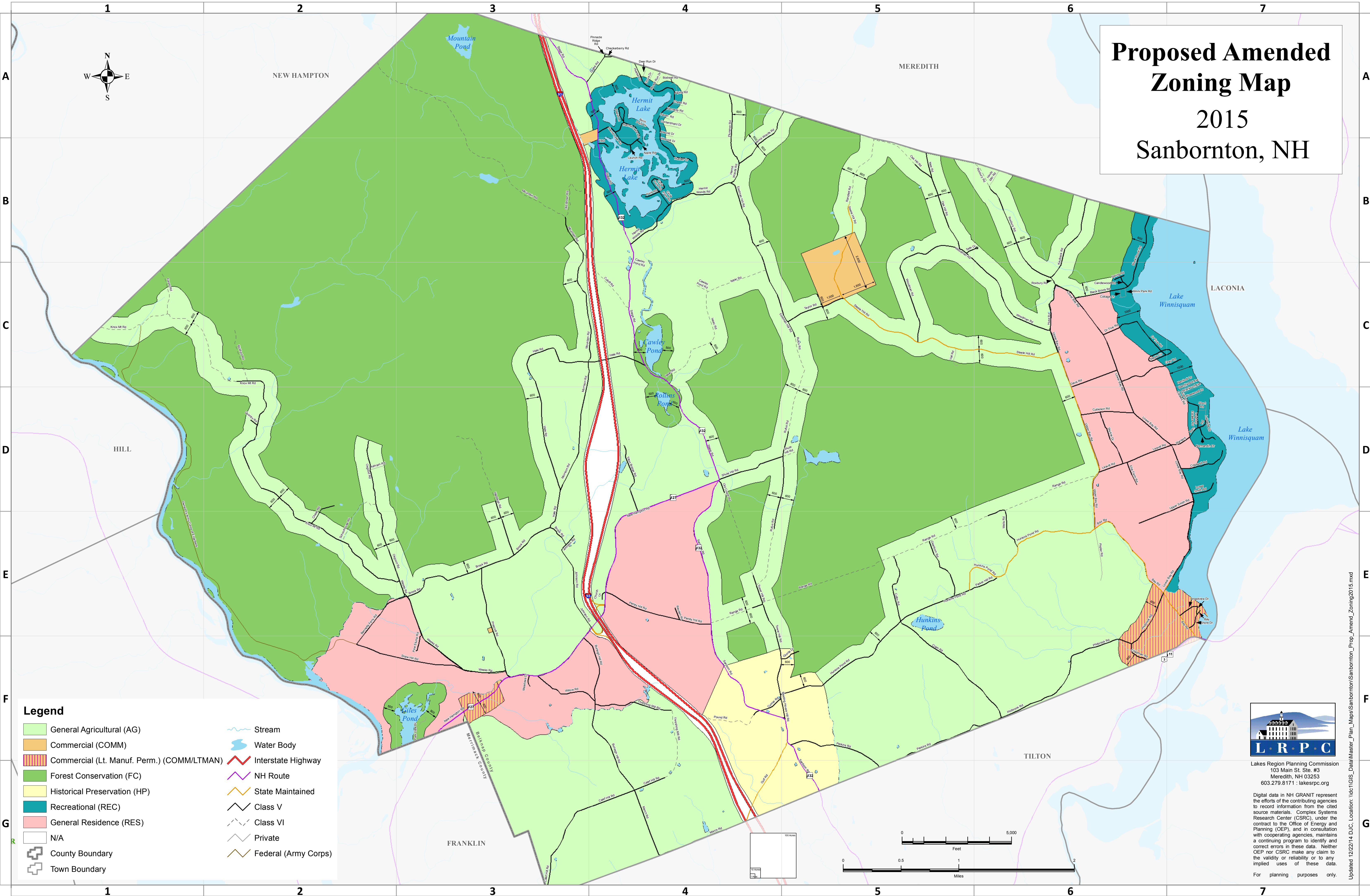
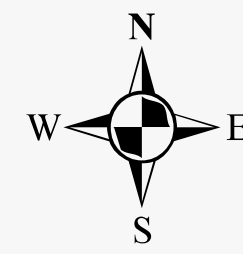


# Proposed Amended Zoning Map 2015 Sanbornton, NH



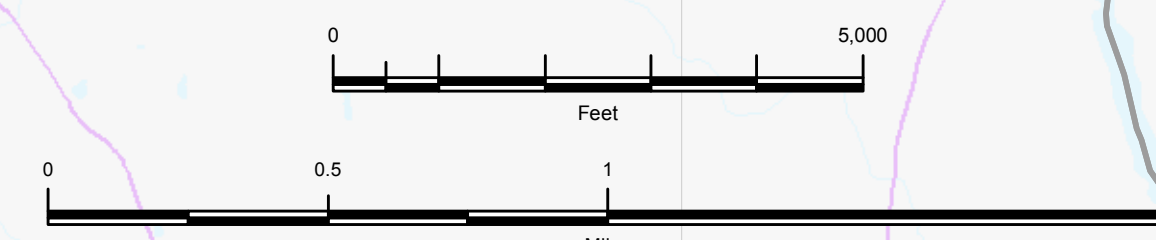
## Legend

- |  |                      |
|--|----------------------|
| General Agricultural (AG)                  | Stream               |
| Commercial (COMM)                          | Water Body           |
| Commercial (Lt. Manuf. Perm.) (COMM/LTMAN) | Interstate Highway   |
| Forest Conservation (FC)                   | NH Route             |
| Historical Preservation (HP)               | State Maintained     |
| Recreational (REC)                         | Class V              |
| General Residence (RES)                    | Class VI             |
| N/A  | Private              |
| County Boundary                            | Federal (Army Corps) |
| Town Boundary                              |                      |



Lakes Region Planning Commission  
103 Main St. Ste. #3  
Meredith, NH 03253  
603.279.8171 : lakesrpc.org

Digital data in NH GRANIT represent the efforts of the contributing agencies to record information from the cited source materials. Complex Systems Research Center (CSRC), under the contract to the Office of Energy and Planning (OEP), and in consultation with cooperating agencies, maintains a continuing program to identify and correct errors in these data. Neither OEP nor CSRC make any claim to the validity or reliability or to any implied uses of these data.  
For planning purposes only.



Updated 12/22/14 D.J.C. Location: \\dct\GIS\_Data\Master\_Plan\_Maps\Sanbornton\Sanbornton\_Prop\_Amend\_Zoning2015.mxd