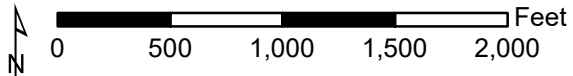


Aerial Imagery

Swain Property
 Sanbornton, ±320 acres



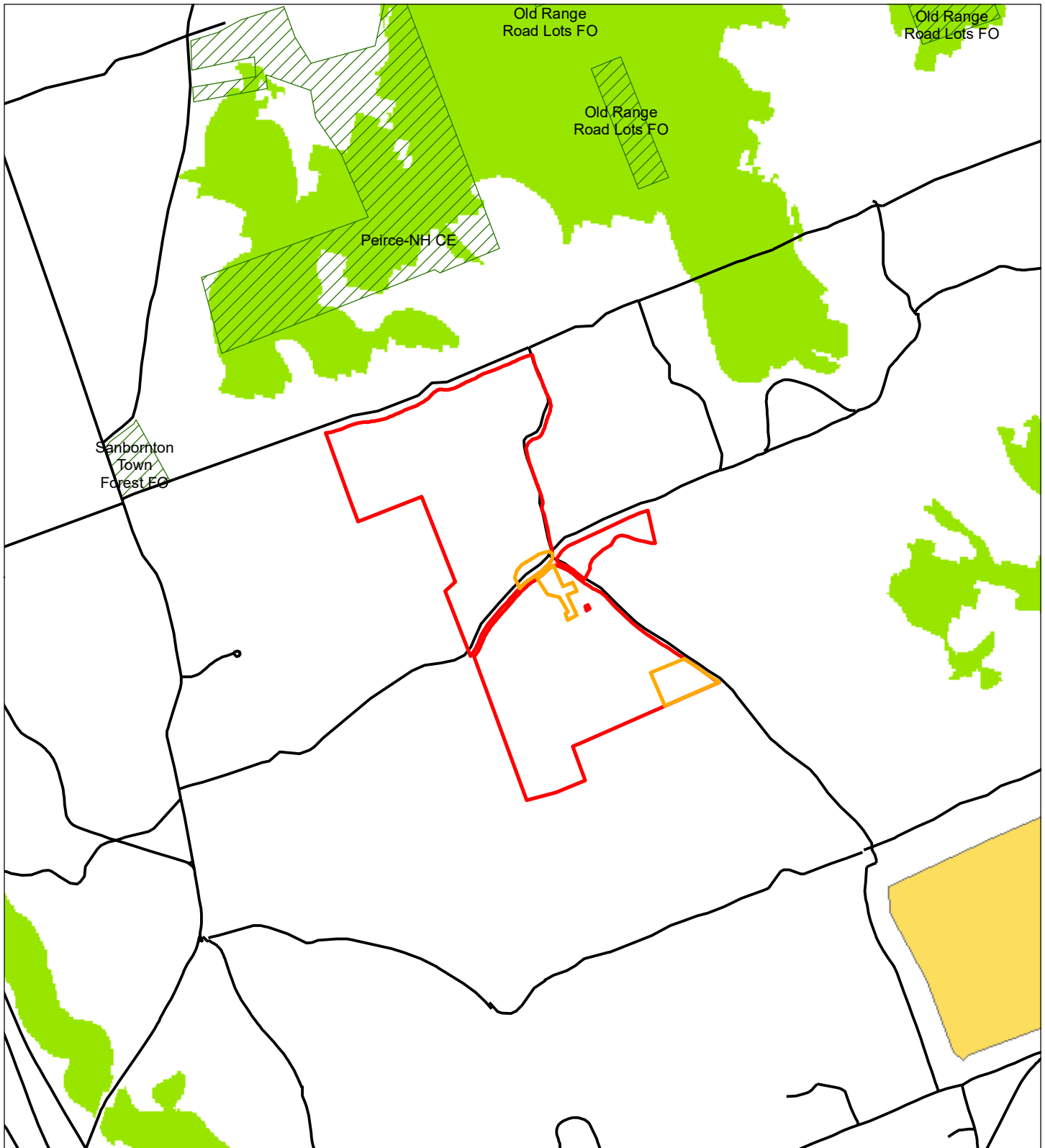
Legend

- Conservation Easement Boundary
- Proposed Excluded Areas



Matthew Morris
 Conservation Easement Steward
 June 2023

All boundaries and locations are approximate.
 Source: DOT 2015



Conservation Focus Area

Swain Property
Sanbornton, ±320 acres

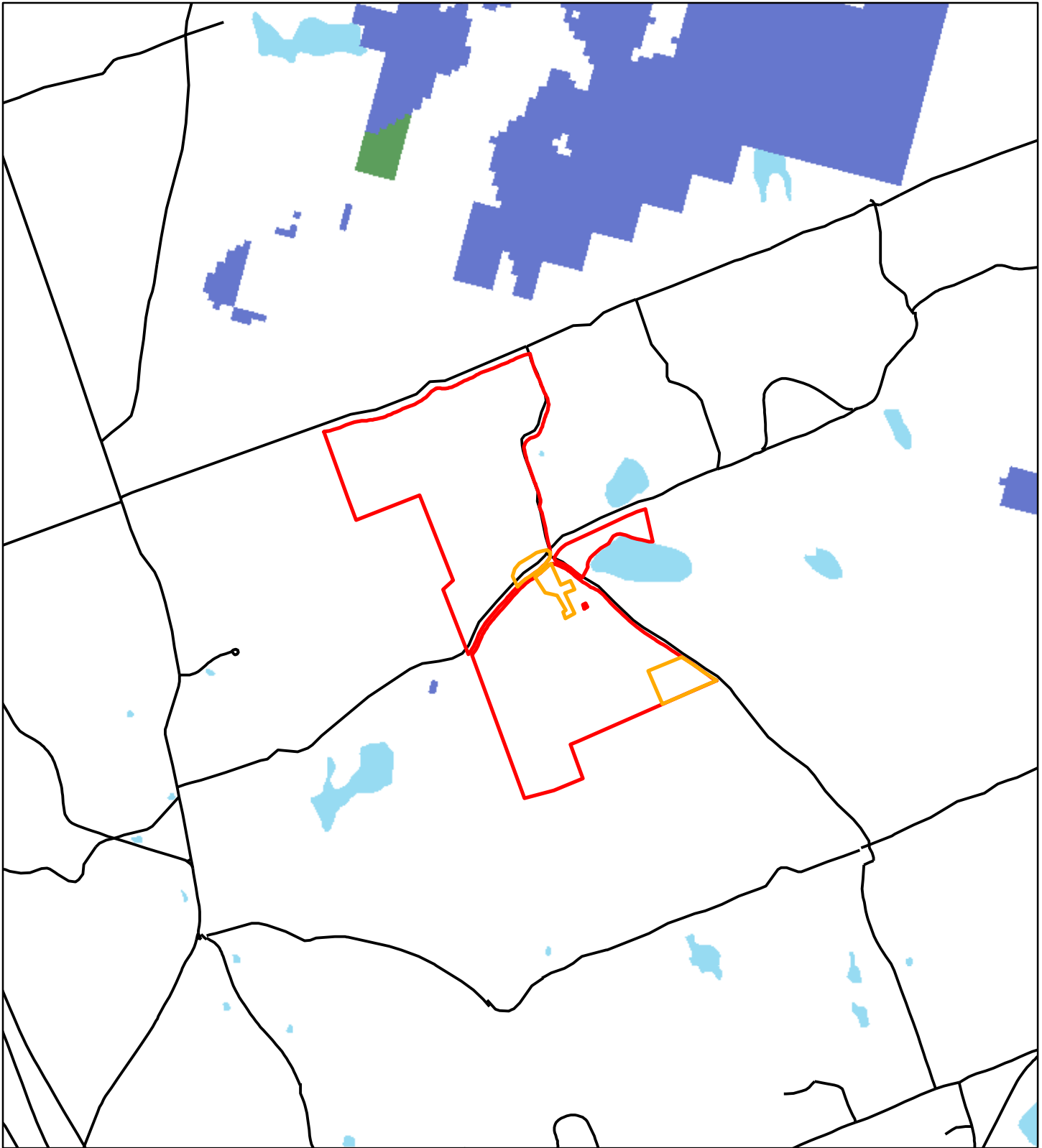


All boundaries and locations are approximate.
Source: Conserved Lands by the University of New Hampshire,
Parcels by NH Dept of Revenue Administration

- Subject Property
 - Excluded Area
 - Roads
 - Conserved Lands
- Conservation Focus Areas**
- Tier 1: Highest Priority
 - Tier 2: High Priority
- Shoreland Conservation Zone**
- 1: Lowest
 - 2
 - 3
 - 4
 - 5
 - 6: Highest

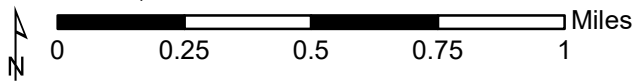


Matthew Morris
Conservation Easement Steward
June 2023










Climate Change Resiliency & Flow

Swain Property
Sanbornton, ±320 acres

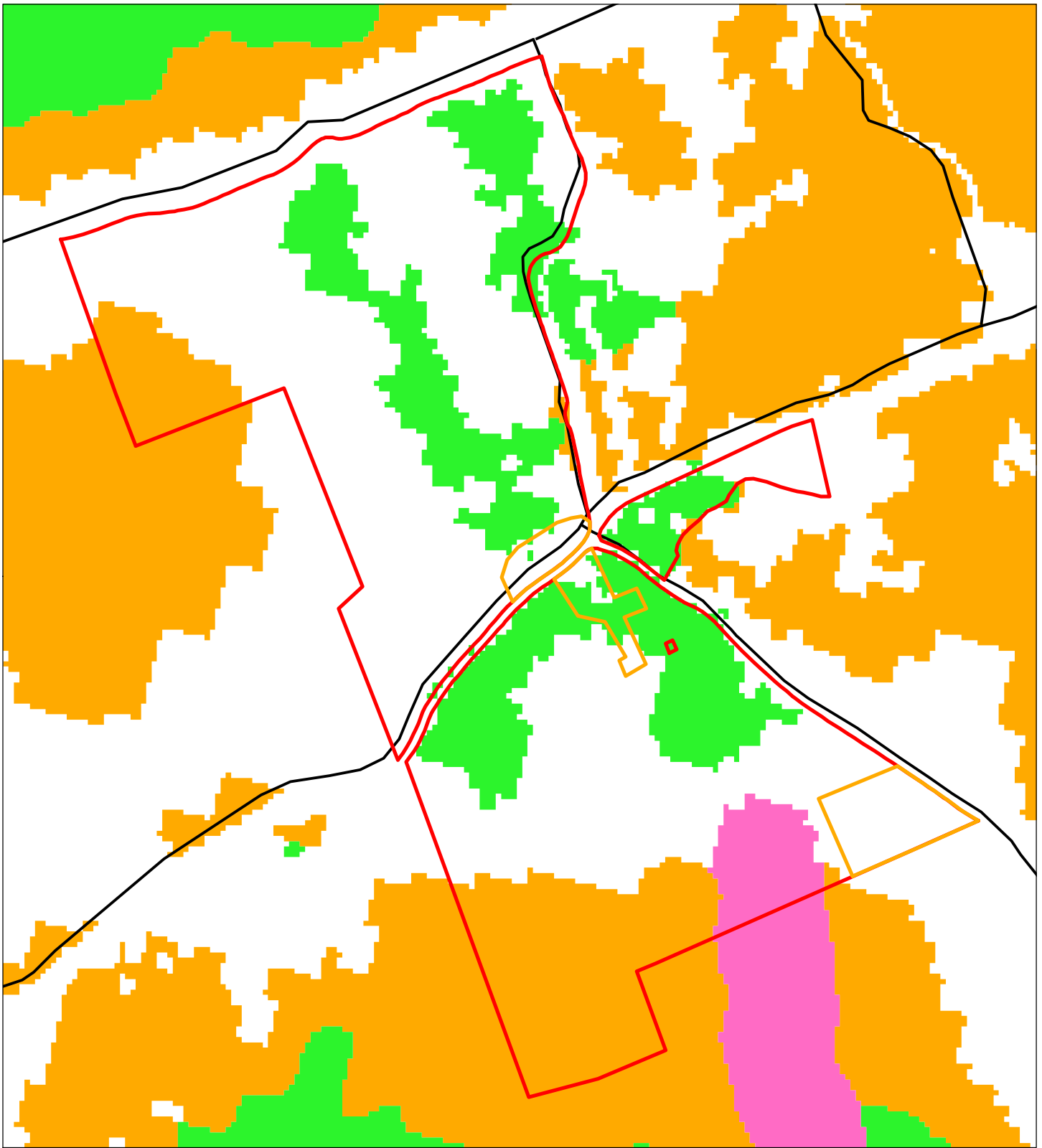


All boundaries and locations are approximate.
Source: Climate Change Resiliency Data by
The Nature Conservancy (2016). Parcels by
NH Dept. of Revenue Administration.

-  Subject Property
-  Excluded Area
-  Resiliency, Flow, and Recognized Biodiversity
-  Resiliency and Flow
-  Resiliency and Recognized Biodiversity
-  Water Bodies
-  Roads

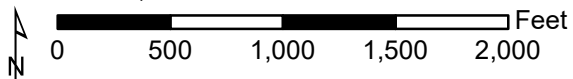


Matthew Morris
Conservation Easement Steward
June 2023



Wildlife Action Plan

Swain Property
Sanbornton, ±320 acres



All boundaries and locations are approximate.
Source: NH Wildlife Action Plan 2015: Highest Ranked Wildlife Habitat by NH Fish and Game Department, Wildlife Division, Parcels by NH Dept of Revenue Administration

- Subject Property
- Excluded Area
- Roads

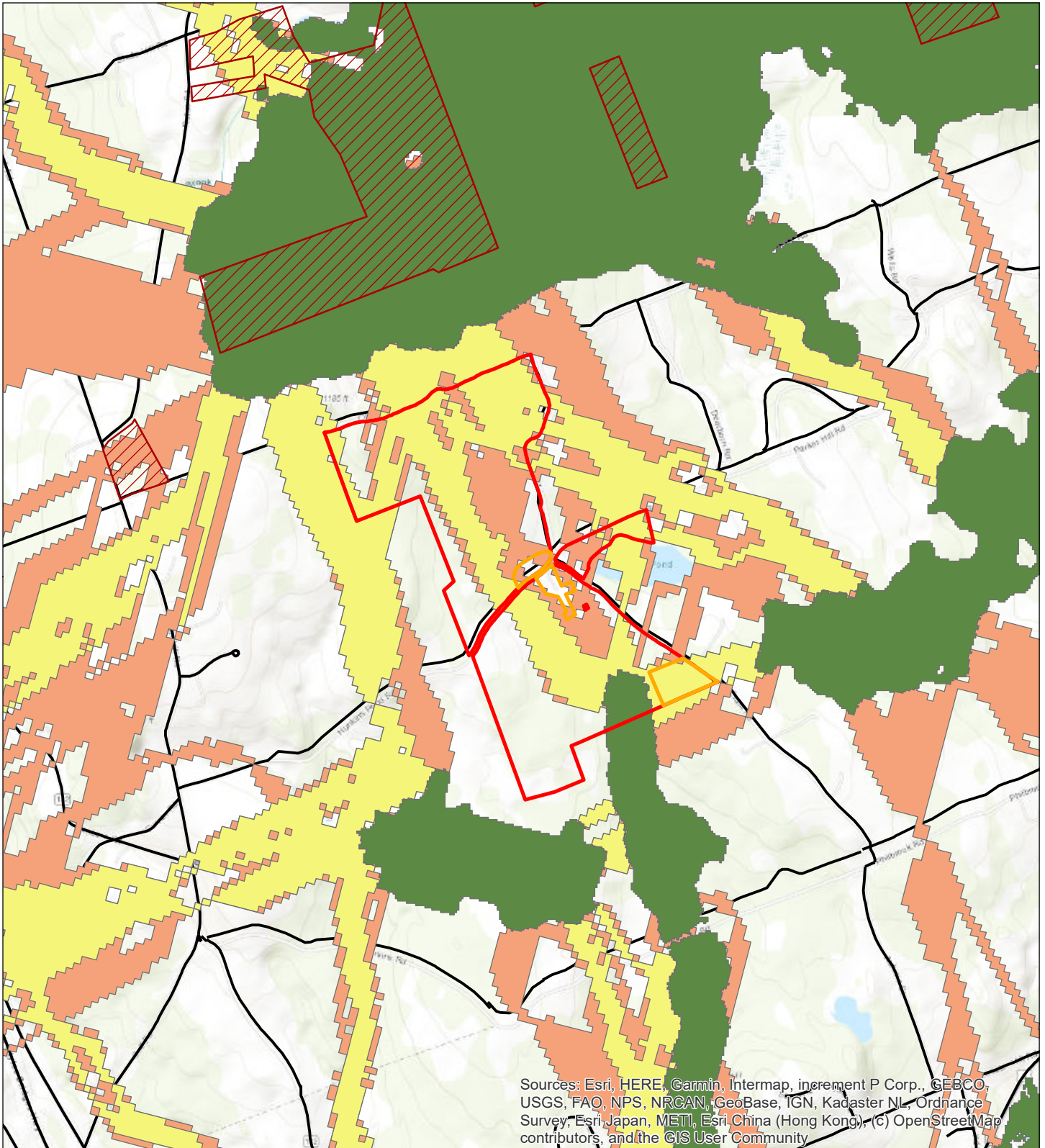
WAP_2020

Ranked Habitat in New Hampshire

- 1 Highest Ranked Habitat in New Hampshire
- 2 Highest Ranked Habitat in Biological Region
- 3 Supporting Landscapes



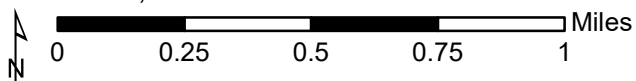
Matthew Morris
Conservation Easement Steward
June 2023



Sources: Esri, HERE, Garmin, Intermap, increment P Corp., GEBCO, USGS, FAO, NPS, NRCAN, GeoBase, IGN, Kadaster NL, Ordnance Survey, Esri Japan, METI, Esri China (Hong Kong), (c) OpenStreetMap contributors, and the GIS User Community

Wildlife Corridors

Swain Property
Sanbornton, ±320 acres

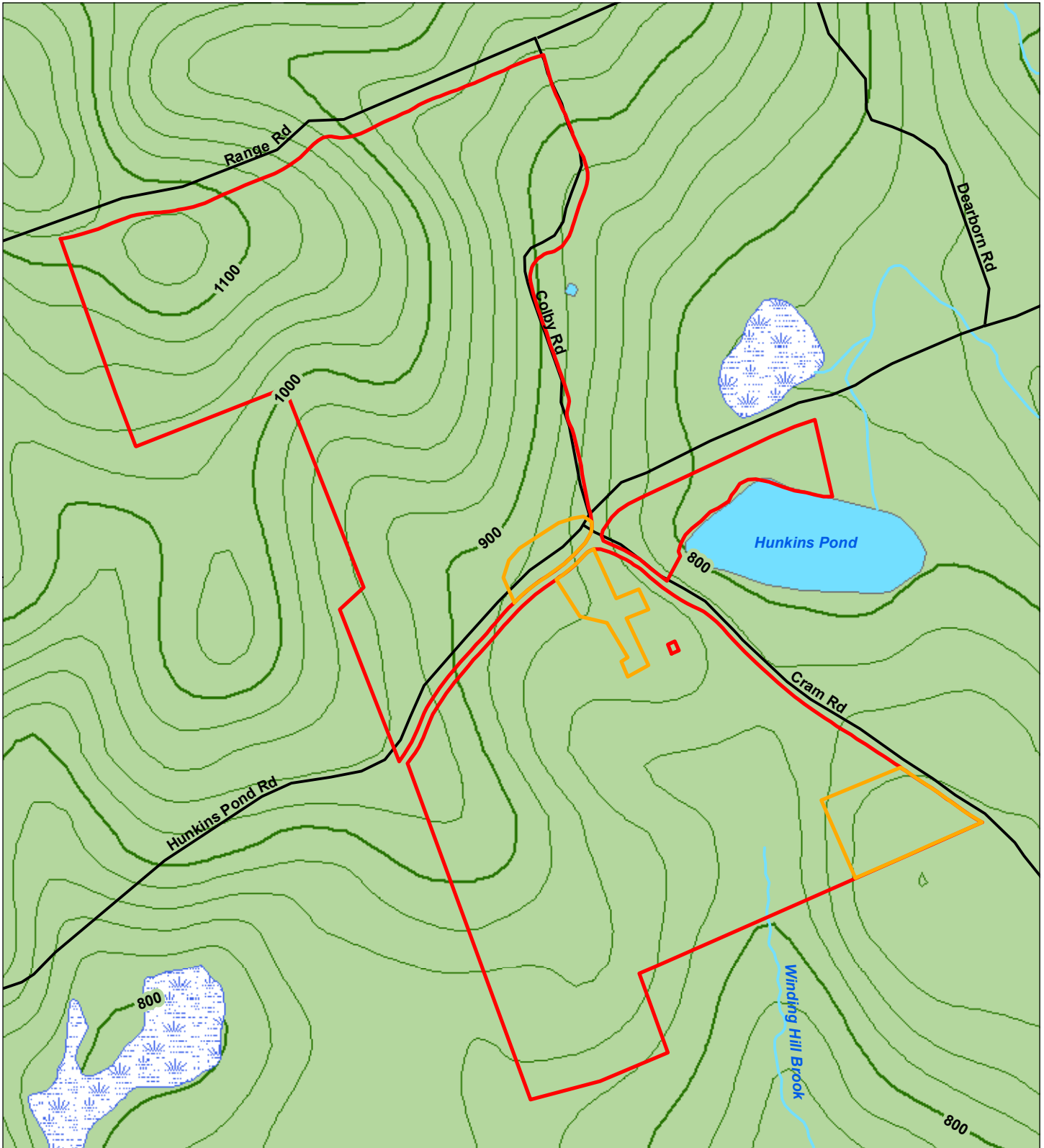


All boundaries and locations are approximate.
Source: NH Wildlife Corridors Map 2022 by NH Fish and Game Department, Wildlife Division. Parcels by NH Dept of Revenue Administration

- Subject Property
- Excluded Area
- Prioritized Habitat Blocks
- Wildlife Corridors
- Wildlife Secondary Corridors
- Conservation Land
- Roads

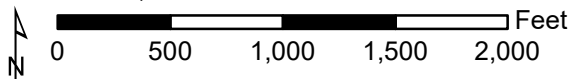


Matthew Morris
Conservation Easement Steward
June 2023






Water Resources

Swain Property
Sanbornton, ±320 acres

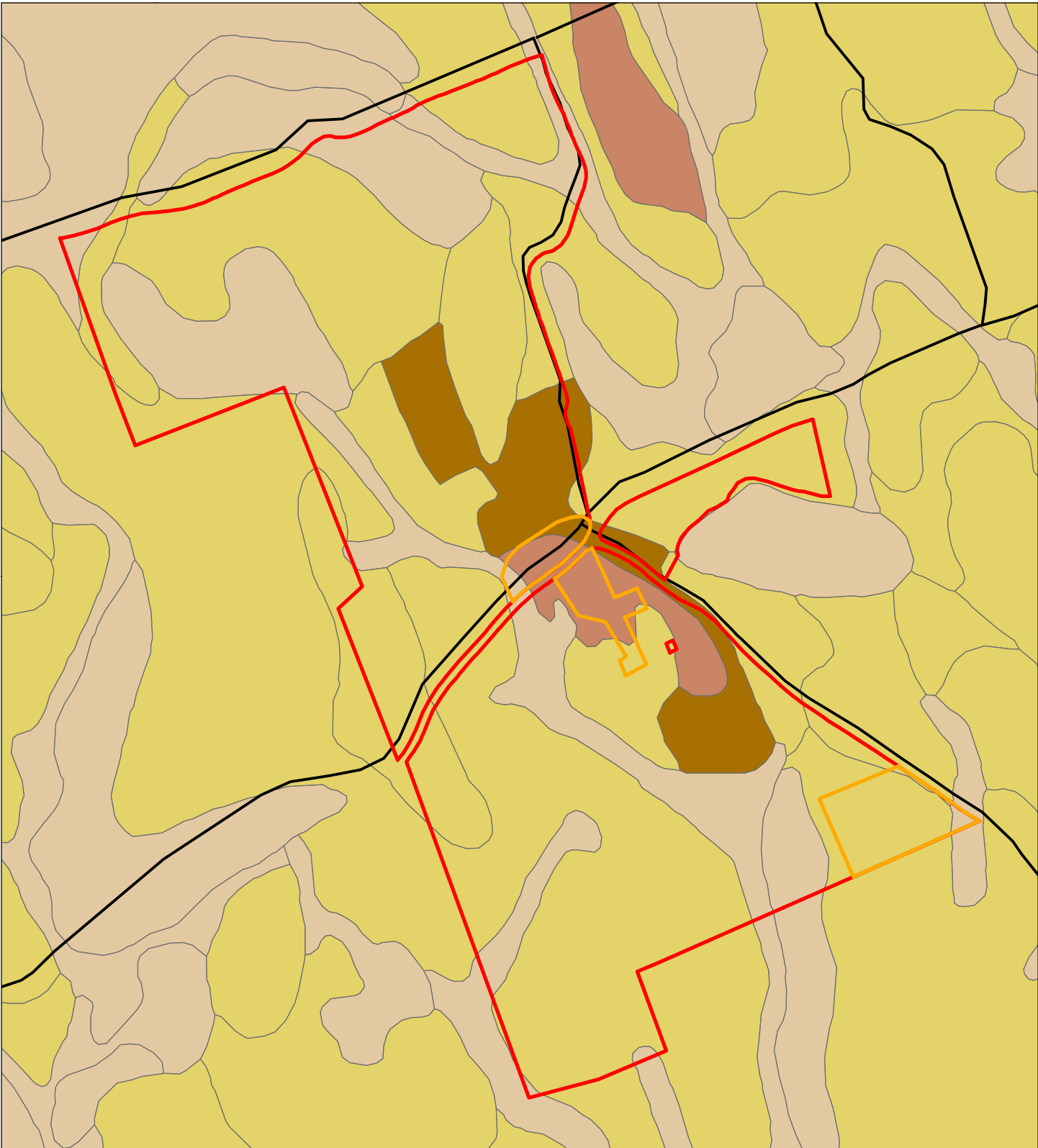


All boundaries and locations are approximate.
Source: National Wetland Inventory, 20 ft Contours generated from LiDAR,
Parcels by NH Dept of Revenue Administration

-  Subject Property
-  Excluded Area
-  Stream/River
-  Lake/Pond
-  Reservoir
-  Swamp/Marsh
-  Roads

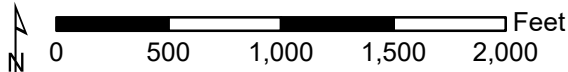


Matthew Morris
Conservation Easement Steward
June 2023



Farm Soil Resources

Swain Property
 Sanbornton, ±320 acres



All boundaries and locations are approximate.
 Source: U.S. Department of Agriculture, Natural Resources Conservation Service,
 Parcels by NH Dept of Revenue Administration

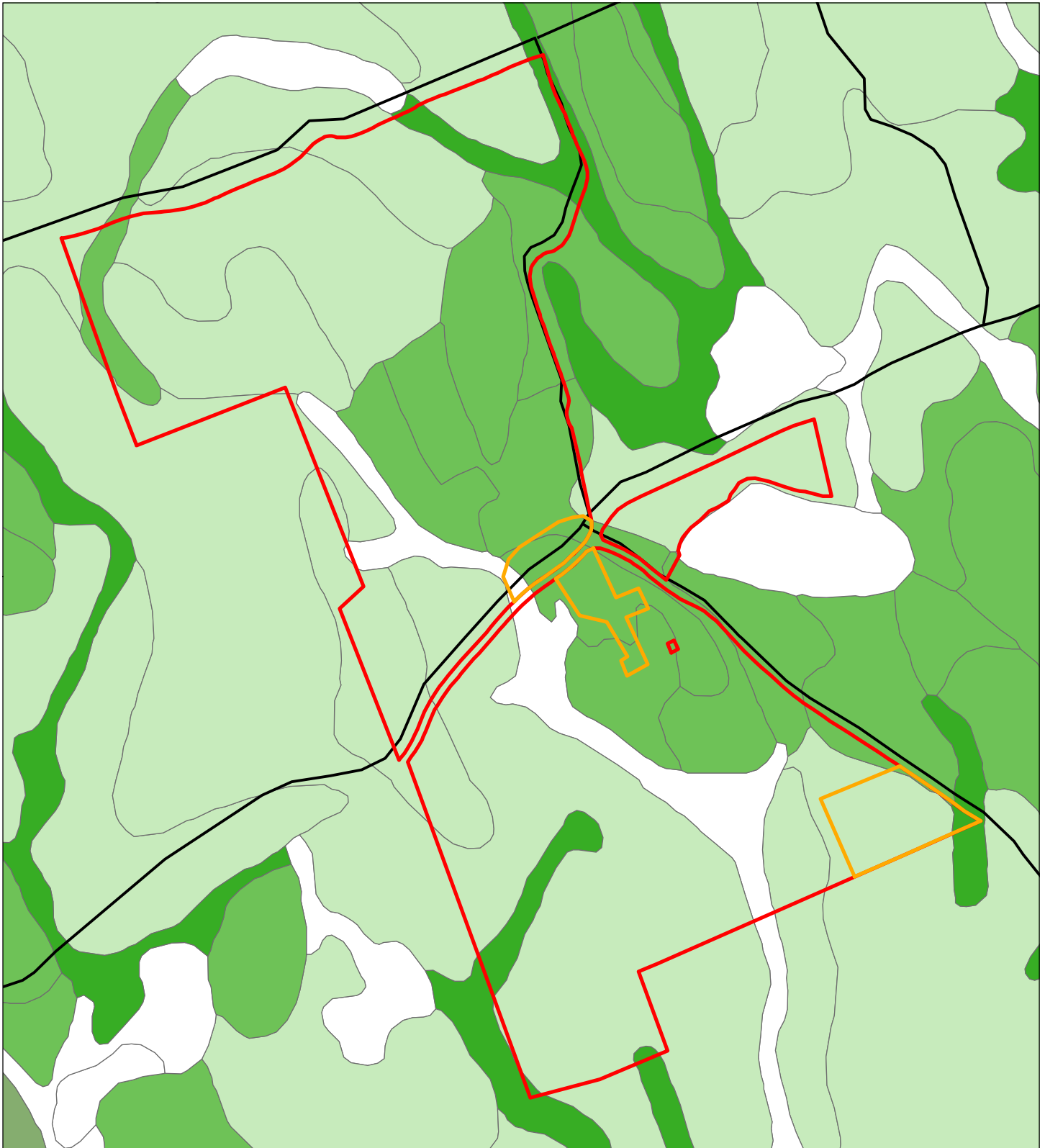
- Subject Property
- Excluded Area
- Roads

Farmland Soils

- All areas are prime farmland
- Farmland of local importance
- Farmland of statewide importance
- Not prime farmland



Matthew Morris
 Conservation Easement Steward
 June 2023



Forest Soil Resources

Swain Property
Sanbornton, ±320 acres

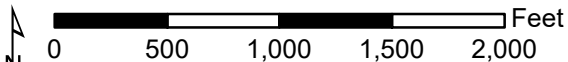
- Subject Property
- Excluded Area
- Roads

Forest Group

- Group IA
- Group IB
- Group IC
- Group IIA
- Group IIB
- NC



Matthew Morris
Conservation Easement Steward
June 2023



All boundaries and locations are approximate.
Source: U.S. Department of Agriculture, Natural Resources Conservation Service,
Parcels by NH Dept of Revenue Administration